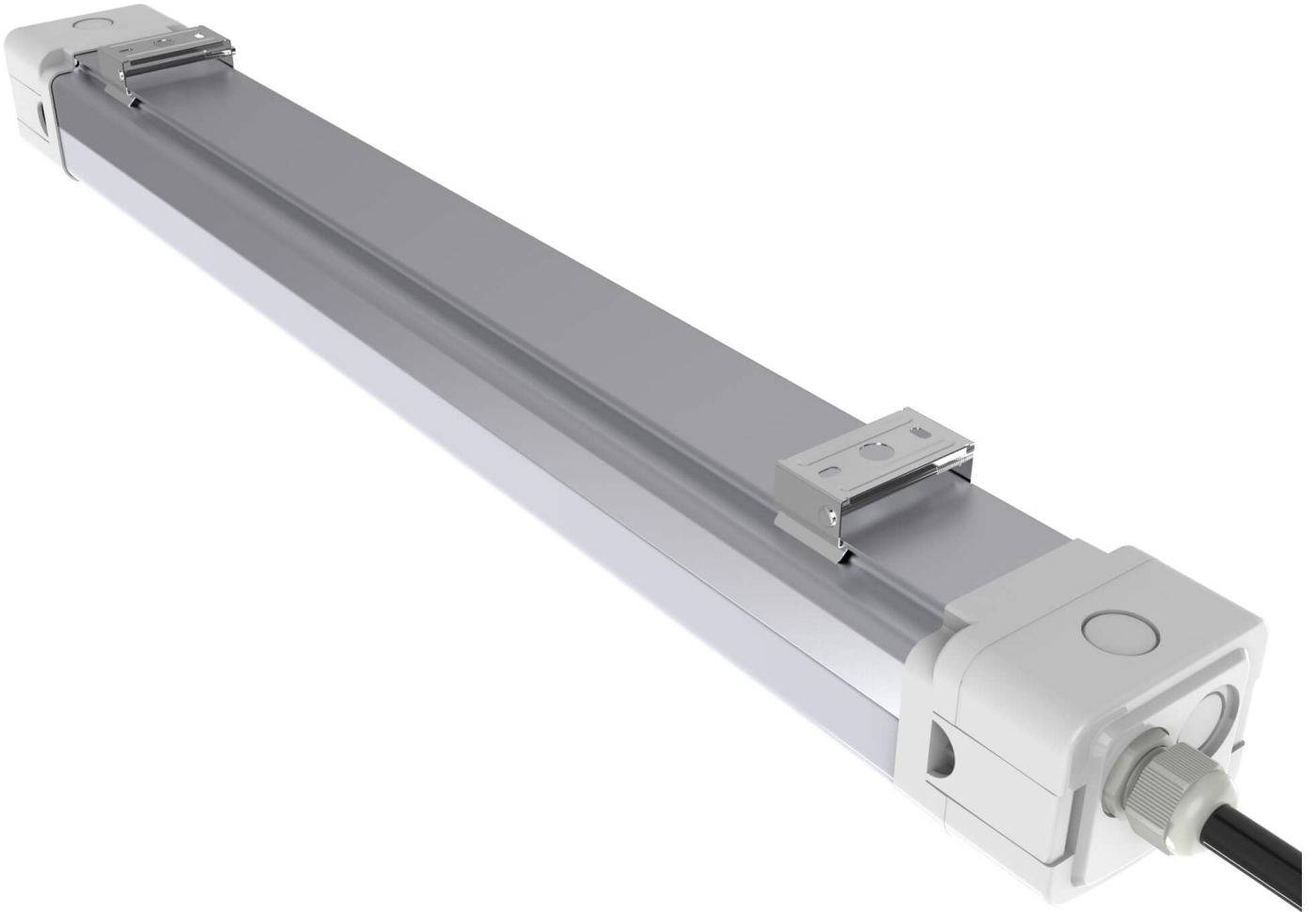


In today's industrial landscape, the need for reliable and efficient lighting solutions is paramount. **Commercial LED lighting for harsh environments** has emerged as a game-changer, offering numerous advantages that cater specifically to challenging conditions. This article delves into the key benefits of using LED lighting in such settings, focusing on durability, efficiency, and cost savings.



## Durability of Commercial LED Lighting for Harsh Environments

One of the most significant advantages of **commercial LED lighting for harsh environments** is its exceptional durability. Unlike traditional lighting options, LEDs are built to withstand extreme conditions, including:

- High and low temperatures
- Moisture and humidity
- Vibration and impact
- Chemical exposure

These features make LEDs ideal for use in factories, warehouses, and outdoor settings where environmental factors can compromise lighting performance. Wouldn't it be reassuring to know that your lighting fixtures can endure the rigors of a harsh environment without frequent replacements?

## Efficiency and Performance

Another compelling reason to consider **commercial LED lighting for harsh environments** is its energy efficiency. LEDs consume significantly less power than traditional incandescent or fluorescent lights, leading to lower energy bills. In fact, they can be up to 80% more efficient. This efficiency translates into:

1. Longer operational life, often exceeding 50,000 hours.
2. Reduced heat output, minimizing cooling costs.
3. Less frequent maintenance and replacement, saving time and resources.

When evaluating lighting options, it is essential to consider how energy-efficient solutions can contribute to overall operational efficiency. Could switching to LED lighting be the key to optimizing your energy consumption?

## Cost Savings Over Time

Investing in **commercial LED lighting for harsh environments** may require a higher upfront cost compared to traditional lighting. However, the long-term savings are undeniable. The combination of reduced energy consumption and lower maintenance costs results in significant financial benefits. Here are some aspects to consider:

- Lower electricity bills due to reduced energy usage.
- Fewer replacements leading to lower labor costs.
- Potential tax incentives for energy-efficient upgrades.

When you weigh the initial investment against the long-term savings, the choice becomes clear. Wouldn't you want to make a decision that benefits both your budget and the environment?

## Conclusion

In conclusion, **commercial LED lighting for harsh environments** offers a multitude of benefits that enhance durability, efficiency, and cost savings. By choosing LED solutions, businesses can ensure reliable lighting that withstands the challenges of demanding conditions. For those looking to explore high-quality options, consider checking out for a range of durable and efficient lighting solutions.