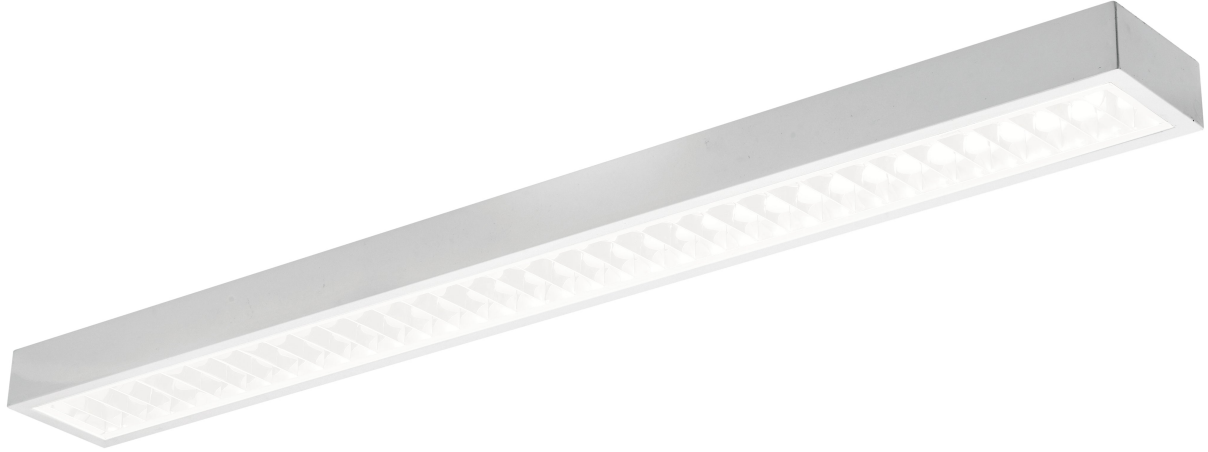


In today's commercial environments, ensuring safety and efficiency is paramount. One innovative solution that addresses both needs is **LED linear ceiling lights with emergency battery backup**. These fixtures not only provide excellent illumination but also serve as a reliable source of light during power outages. This article delves into the numerous advantages of integrating these lighting solutions into your commercial space.



## Enhanced Safety Features

One of the primary benefits of **LED linear ceiling lights with emergency battery backup** is their ability to enhance safety. In the event of a power failure, these lights automatically switch on, illuminating exit routes and helping occupants navigate safely. This feature is particularly crucial in commercial settings, where large crowds may be present. Have you considered how your current lighting solutions would perform during an emergency?

- Automatic activation during power outages
- Illumination of exit signs and pathways
- Reduced risk of accidents and injuries

## Energy Efficiency and Cost Savings

Another significant advantage of using **LED linear ceiling lights with emergency battery backup** is their energy efficiency. LED technology consumes less power compared to traditional lighting options, leading to lower energy bills. Additionally, the long lifespan of LED fixtures means reduced maintenance costs. If you are looking to cut down on operational expenses, investing in these lights could be a wise decision.

1. Lower energy consumption
2. Longer lifespan reduces replacement frequency
3. Potential for tax incentives or rebates

## Versatile Design Options

LED linear ceiling lights come in various designs and styles, making them suitable for a wide range of commercial applications. Whether you are outfitting an office, retail space, or warehouse, these fixtures can seamlessly blend with your existing decor. The sleek, modern appearance of **LED linear ceiling lights with emergency battery backup** enhances the aesthetic appeal of any environment.

For those interested in exploring design options, consider visiting for a variety of choices that meet your lighting needs.

## Environmental Benefits

Lastly, the use of **LED linear ceiling lights with emergency battery backup** contributes to environmental sustainability. LEDs are free from toxic materials, such as mercury, and are 100% recyclable. By choosing these lighting solutions, businesses can reduce their carbon footprint and promote a greener future. Wouldn't it be beneficial for your company to align with eco-friendly practices?

In conclusion, the integration of **LED linear ceiling lights with emergency battery backup** into commercial spaces offers numerous benefits, including enhanced safety, energy efficiency, versatile design options, and environmental sustainability. As businesses strive to create safer and more efficient environments, these lighting solutions stand out as a practical choice. Consider making the switch today to improve both safety and operational efficiency in your commercial space.