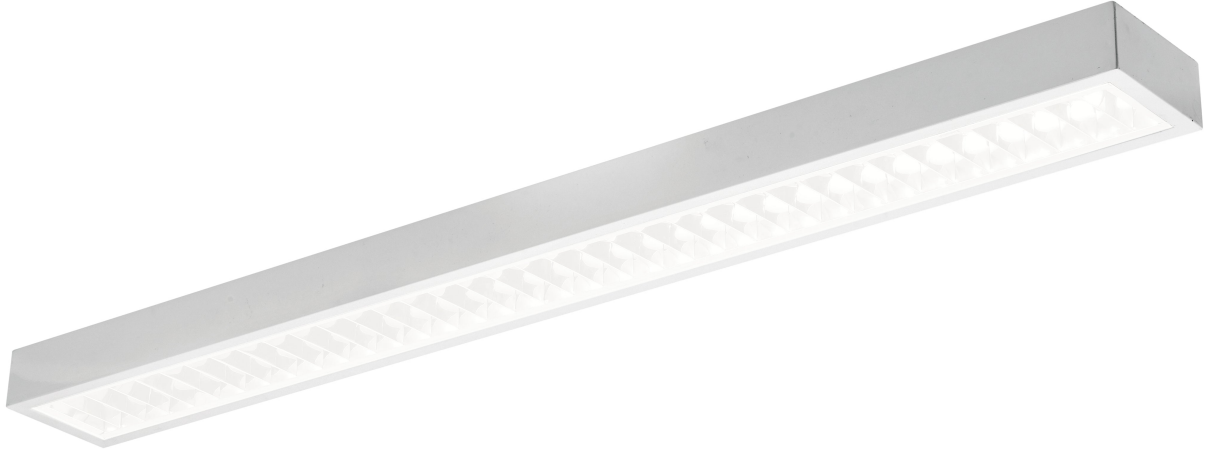


In today's commercial environments, lighting plays a crucial role in both functionality and aesthetics. Among the various options available, **LED linear ceiling lights with emergency battery backup** stand out for their efficiency and safety features. This article delves into the numerous advantages these lighting fixtures offer, making them an ideal choice for businesses.



Energy Efficiency and Cost Savings

One of the primary benefits of **LED linear ceiling lights with emergency battery backup** is their energy efficiency. Unlike traditional lighting solutions, LED technology consumes significantly less power while providing superior illumination. This reduction in energy consumption translates to lower electricity bills, which can be a substantial saving for commercial spaces.

- Long lifespan: LEDs can last up to 50,000 hours, reducing the need for frequent replacements.
- Lower heat emission: LEDs generate less heat, contributing to a cooler environment and reducing air conditioning costs.

Enhanced Safety Features

Safety is paramount in any commercial setting. **LED linear ceiling lights with emergency battery backup** are designed to automatically switch on during power outages, ensuring that emergency exits and pathways remain illuminated. This feature not only enhances safety but also complies with building codes and regulations.

Have you ever considered the implications of a sudden power failure? In such situations, having reliable lighting can make all the difference. Emergency battery backups provide peace of mind, allowing occupants to evacuate safely and efficiently.

Versatility in Design

Another significant advantage of **LED linear ceiling lights with emergency battery backup** is their versatility in design. These fixtures are available in various styles and sizes, making them suitable for different commercial applications, including:

1. Offices
2. Retail spaces
3. Warehouses
4. Educational institutions

With their sleek and modern appearance, these lights can seamlessly integrate into any interior design, enhancing the overall ambiance of the space.

Environmental Impact

In an era where sustainability is a priority, **LED linear ceiling lights with emergency battery backup** contribute positively to environmental conservation. LEDs are free from harmful substances like mercury and are 100% recyclable. By choosing these lighting solutions, businesses can reduce their carbon footprint and

promote a greener future.

For those interested in exploring high-quality options, consider visiting for a range of LED linear ceiling lights that combine functionality with style.

Conclusion

In summary, **LED linear ceiling lights with emergency battery backup** offer numerous benefits that make them an excellent choice for commercial spaces. From energy efficiency and safety features to design versatility and environmental impact, these lighting solutions are not just a trend but a necessity in modern commercial design. Investing in these fixtures can lead to significant long-term savings and enhanced safety for all occupants.