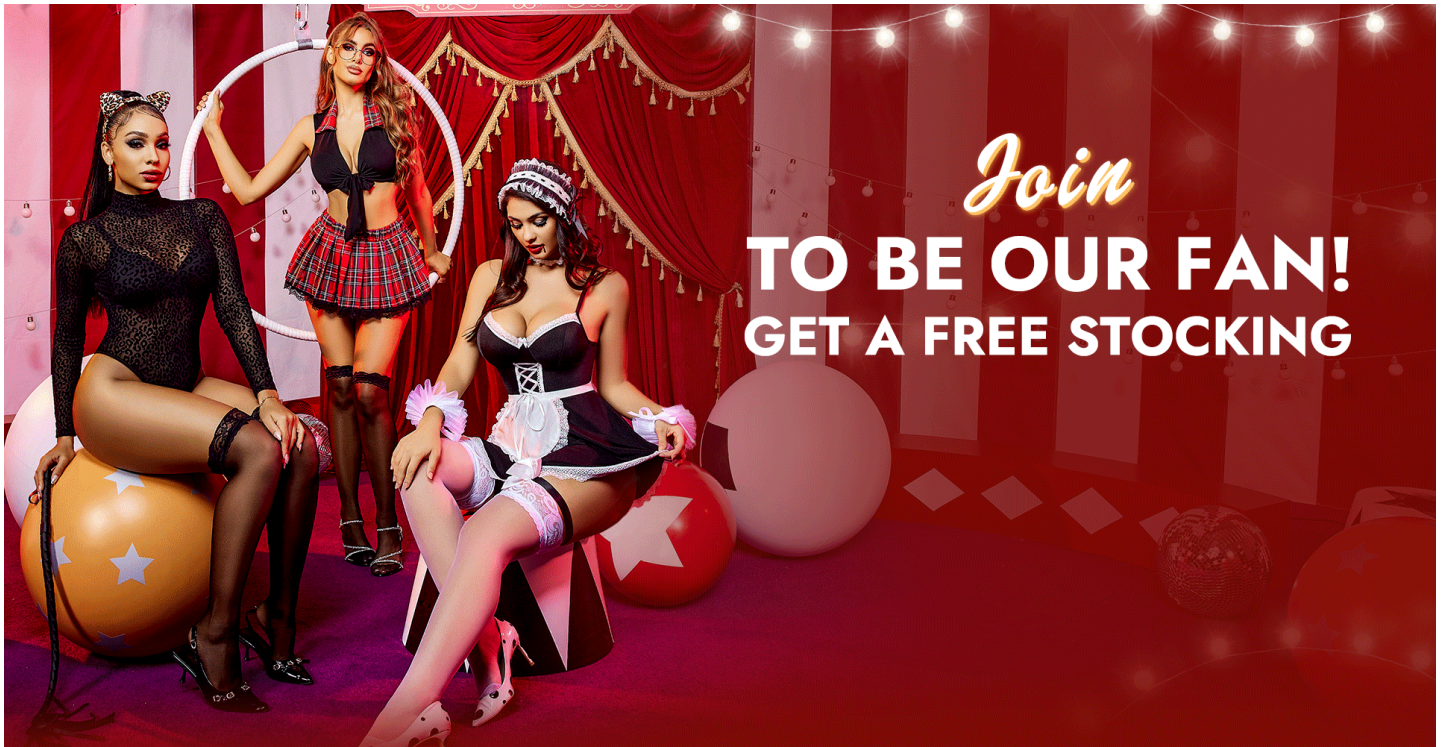


As Halloween approaches, many individuals begin to plan their costumes, and one of the most striking pieces to consider is the **Halloween corset**. This versatile garment can transform your look, adding an element of elegance or edginess, depending on your costume choice. In this guide, we will explore how to select the perfect [halloween corset](#) that complements your outfit and enhances your overall appearance.



Understanding the Halloween Corset

A **Halloween corset** is not just a piece of clothing; it is a statement. Traditionally, corsets are designed to shape and support the torso, creating an hourglass figure. For Halloween, they come in various styles, colors, and materials, allowing for creativity and personalization. Whether you are dressing as a classic witch, a sultry vampire, or a whimsical fairy, the right corset can elevate your costume to new heights.

Choosing the Right Style

- **Classic Victorian:** Ideal for historical or gothic costumes.
- **Steampunk:** Perfect for a unique blend of vintage and futuristic aesthetics.
- **Modern and Edgy:** Great for contemporary costumes that require a bold statement.

When selecting a style, consider the overall theme of your costume. Do you want to evoke a sense of nostalgia, or are you aiming for a more modern look? The style of your **Halloween corset** should align with your vision for the entire outfit.

Material Matters

The material of your corset plays a significant role in both comfort and appearance. Common materials include:

- **Silk:** Luxurious and smooth, ideal for elegant costumes.
- **Leather:** Adds an edgy touch, perfect for a fierce look.
- **Cotton:** Breathable and comfortable, suitable for all-night wear.

Consider the weather and your comfort level when choosing the material. A well-chosen fabric can enhance your experience and ensure that you enjoy your Halloween festivities.

Finding the Right Fit

Fit is crucial when it comes to a **Halloween corset**. An ill-fitting corset can lead to discomfort and detract from your overall look. Here are some tips for finding the right fit:

- Measure your waist accurately.
- Check the sizing chart provided by the manufacturer.
- Consider adjustable options for a more customized fit.

When trying on a corset, ensure that it feels snug but not restrictive. You should be able to move comfortably while still achieving the desired silhouette.

Accessorizing Your Halloween Corset

Once you have selected the perfect **Halloween corset**, think about how to accessorize it. Accessories can enhance your costume and add a personal touch. Consider items such as:

- Jewelry that complements the corset's style.
- Wigs or hairpieces that match your character.
- Props that enhance the overall theme of your costume.

By thoughtfully accessorizing, you can create a cohesive and eye-catching look that will impress at any Halloween gathering.

Conclusion

Choosing the perfect **Halloween corset** can be a fun and rewarding experience. By understanding the various styles, materials, and fitting options available, you can find a corset that not only enhances your costume but also boosts your confidence. For more inspiration and options, visit [. Embrace the spirit of Halloween and let your creativity shine!](#)