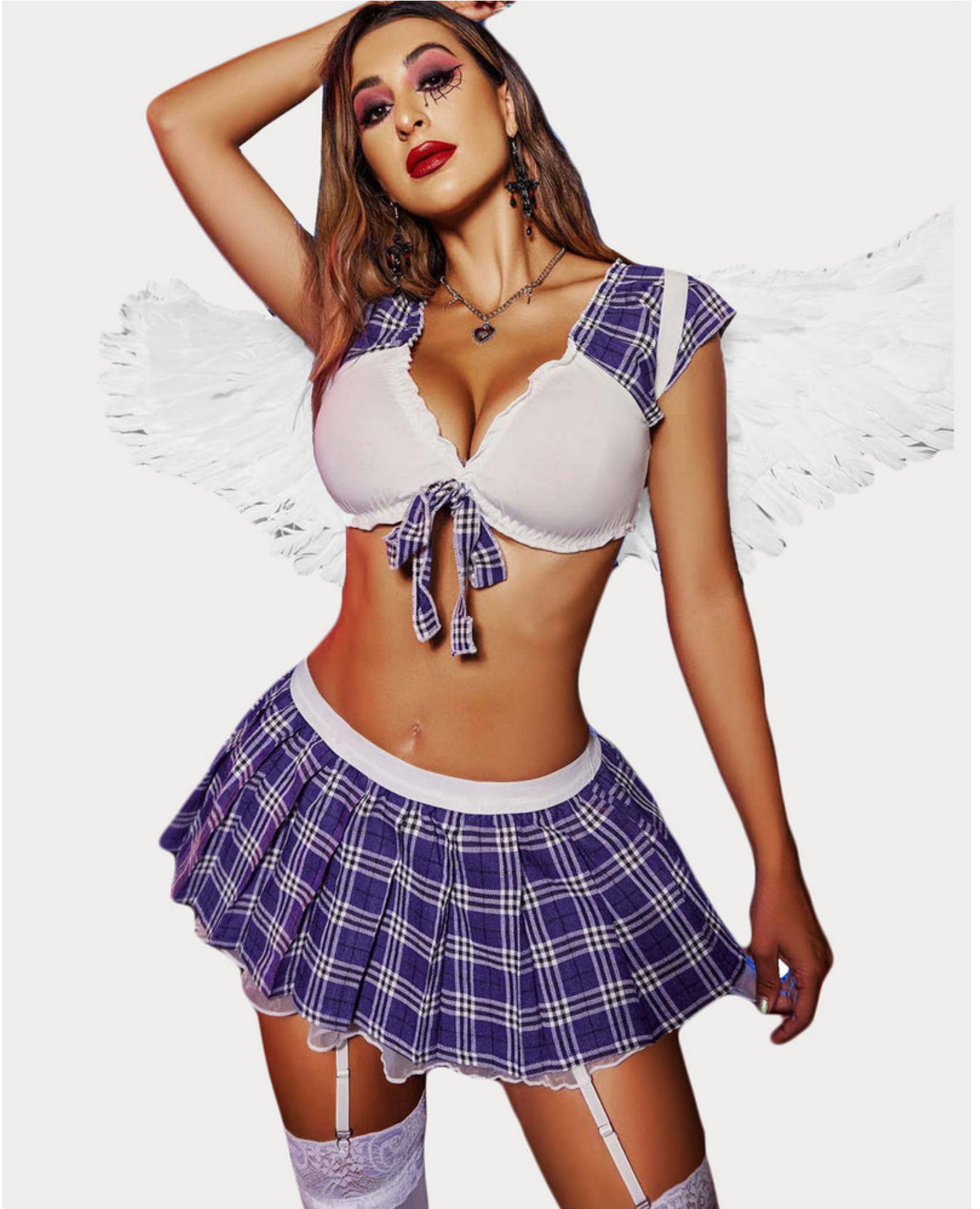


Now that you're wondering, let's look at this [cosplay lingerie sets](#).

In recent years, the popularity of **cosplay lingerie sets** has surged, allowing fans to express their love for their favorite characters in a unique and stylish way. This trend combines the playful elements of cosplay with the allure of lingerie, creating a niche that appeals to a diverse audience. But what exactly are cosplay lingerie sets, and how can you incorporate them into your wardrobe?



Understanding Cosplay Lingerie Sets

Cosplay lingerie sets are designed to mimic the outfits of beloved characters from anime, video games, and movies, while also providing the comfort and sensuality of traditional lingerie. These sets often include bras, panties, and accessories that reflect the aesthetic of the character, making them perfect for conventions, themed parties, or intimate occasions.

"Cosplay lingerie allows fans to celebrate their favorite characters in a way that feels personal and empowering." - Fashion Insider

Choosing the Right Cosplay Lingerie Set

When selecting a **cosplay lingerie set**, consider the following factors:

- **Character Authenticity:** Look for designs that closely resemble the character's outfit.
- **Comfort:** Ensure the materials used are soft and breathable for all-day wear.
- **Size and Fit:** Choose a size that flatters your body shape and provides adequate support.
- **Quality:** Invest in high-quality materials to ensure durability and comfort.

For example, the [Anime-Inspired Lace Set](#) features intricate lace detailing and vibrant colors that capture the essence of your favorite character while providing a comfortable fit.

Styling Tips for Cosplay Lingerie Sets

Incorporating **cosplay lingerie sets** into your wardrobe can be both fun and stylish. Here are some tips to help you make the most of your outfits:

1. **Layering:** Consider wearing your cosplay lingerie under sheer clothing for a playful peek-a-boo effect.
2. **Accessorizing:** Add character-themed accessories, such as wigs or props, to complete your look.
3. **Mix and Match:** Pair different pieces from various sets to create a unique ensemble that reflects your personal style.

Where to Find Quality Cosplay Lingerie Sets

With the rise of this trend, many retailers now offer a wide range of **cosplay lingerie sets**. Online platforms like [Example.com](#) provide a variety of options, ensuring that you can find something that suits your taste and budget. Additionally, local boutiques may carry unique pieces that you won't find online.

For those interested in visual inspiration, check out this [video](#) showcasing the latest trends in cosplay lingerie.

Conclusion

Embracing your favorite characters through **cosplay lingerie sets** is a fantastic way to express your fandom while enjoying the comfort and allure of lingerie. Whether you're attending a convention or simply want to feel empowered at home, these sets offer a playful and stylish option. Remember to choose quality pieces that resonate with your personal style, and don't hesitate to experiment with different looks!

References

- [cosplay lingerie sets](#)