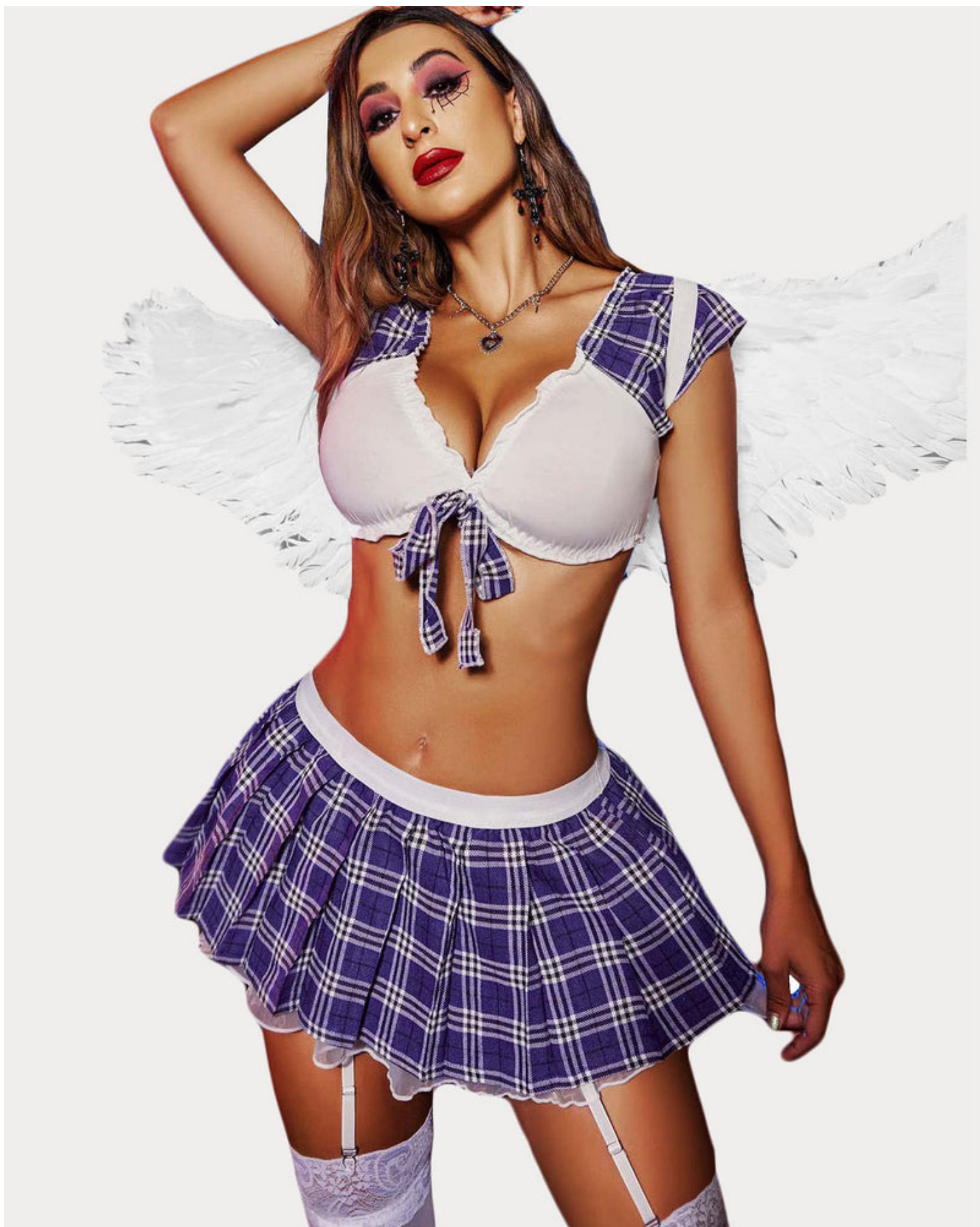


Cosplay lingerie is an intriguing fusion of fantasy and practicality, allowing enthusiasts to express their love for characters while maintaining comfort and style. This niche within the cosplay community has gained significant popularity, as it offers a unique way to embody beloved personas without sacrificing the essential elements of lingerie. In this article, we will explore the various aspects of cosplay lingerie, including its appeal, design considerations, and how to choose the perfect pieces for your next event.



Understanding the Appeal of Cosplay Lingerie

Why has cosplay lingerie become a staple in the cosplay community? The answer lies in its ability to combine creativity with sensuality. Many fans enjoy dressing as their favorite characters, and incorporating lingerie into their outfits adds an exciting twist. This blend allows for a more intimate connection to the characters while also embracing personal style.

"Cosplay lingerie is not just about looking good; it's about feeling confident and empowered in your skin." - Cosplay Enthusiast

Design Considerations for Cosplay Lingerie

When selecting cosplay lingerie, several design elements should be taken into account:

- **Character Accuracy:** Ensure that the lingerie reflects the character's style and color scheme.
- **Comfort:** Choose materials that feel good against the skin, as you may wear them for extended periods.
- **Functionality:** Consider how the lingerie will fit into your overall costume. Will it be visible? Does it need to provide support?

For example, a popular choice among cosplayers is the [Cosplay Lingerie Set](#), which features intricate designs that pay homage to various characters while ensuring comfort and support. This set exemplifies how lingerie can be both functional and visually appealing.

Choosing the Right Cosplay Lingerie

How do you select the perfect cosplay lingerie for your needs? Here are some tips:

1. Identify the character you want to portray and research their outfit.
2. Look for lingerie that complements the character's aesthetic.
3. Consider your body type and choose pieces that enhance your natural shape.
4. Don't forget about accessories; they can elevate your look significantly.

Additionally, many online retailers offer a wide variety of options. For instance, check out this [video guide](#) that showcases different styles and how to wear them effectively.

Conclusion: Embracing Your Inner Character

In conclusion, [cosplay lingerie](#) is a vibrant and exciting way to express your passion for characters while enjoying the comfort of intimate apparel. By understanding the appeal, considering design elements, and choosing the right pieces, you can create a stunning look that embodies both fantasy and function. Remember, the key to a successful cosplay experience lies in your confidence and creativity. So, embrace your inner character and let your imagination run wild!

References

- [cosplay lingerie](#)