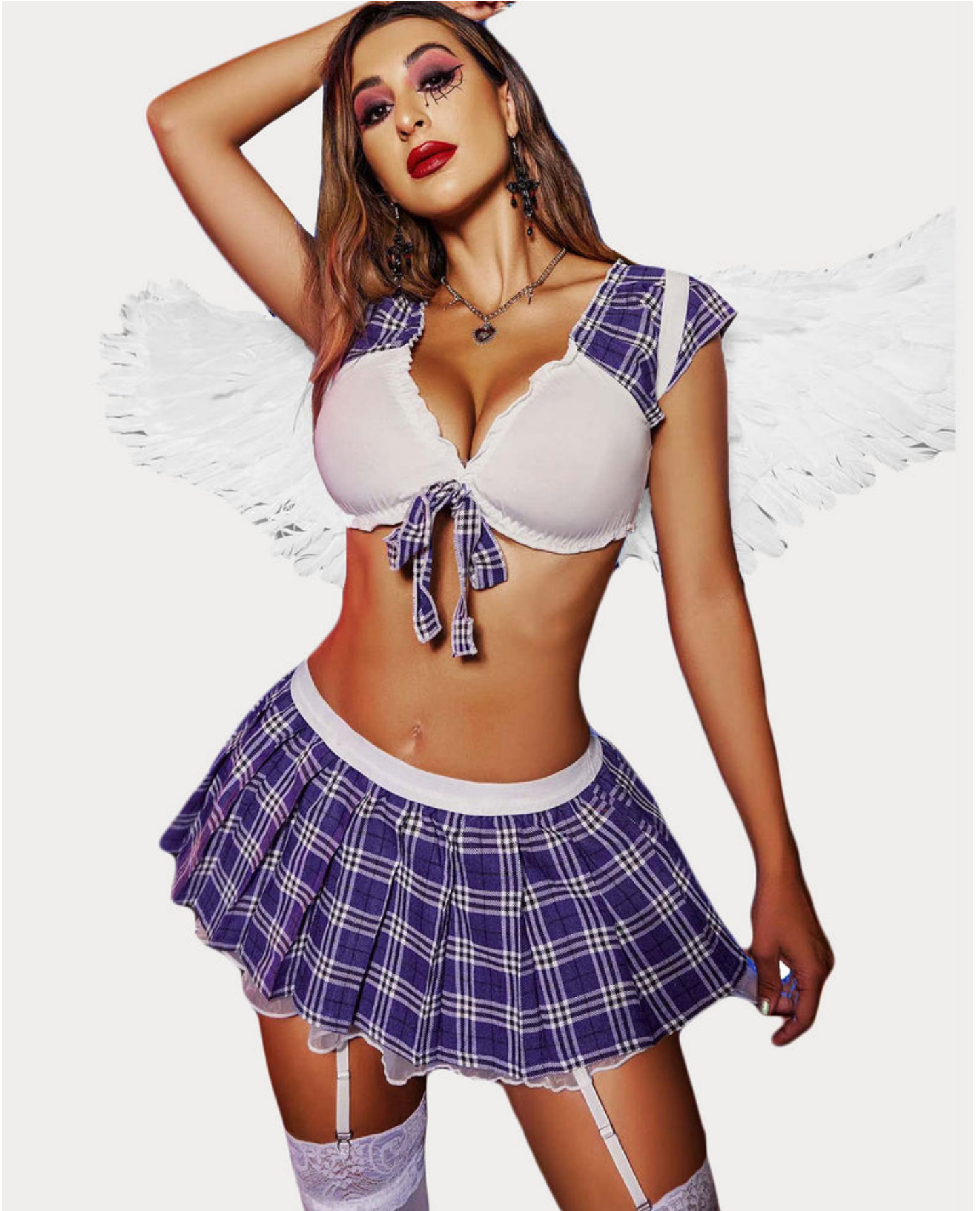


Why don't we learn about [cosplay lingerie sets](#).

Cosplay has evolved into a vibrant community where fans express their love for characters through intricate costumes and accessories. Among these, **cosplay lingerie sets** have emerged as a unique way to blend sensuality with fandom. But how do you choose the right set for your character? This guide will help you navigate the exciting world of cosplay lingerie.



Understanding Cosplay Lingerie Sets

Cosplay lingerie sets are designed to reflect the aesthetics of your favorite characters while providing comfort and style. These sets can range from playful and cute to bold and daring. When selecting a set, consider the following:

- **Character Accuracy:** Ensure that the lingerie aligns with the character's style.
- **Material:** Choose fabrics that are comfortable and breathable.
- **Fit:** A well-fitting set enhances your overall look and confidence.

Choosing the Right Style

When it comes to **cosplay lingerie sets**, style is paramount. Different characters evoke different vibes, and your lingerie should reflect that. For instance, if you are cosplaying a character known for their elegance, consider a lace or satin set that exudes sophistication. On the other hand, a playful character might be better suited to a vibrant, colorful ensemble.

"The right lingerie can transform your entire cosplay experience, making you feel more connected to your character." - Cosplay Enthusiast

Popular Themes in Cosplay Lingerie

Many themes resonate within the cosplay community, and certain styles of lingerie sets have become particularly popular:

1. **Fantasy Characters:** Think of mythical creatures or magical beings.
2. **Anime and Manga:** These often feature bold colors and unique designs.
3. **Video Game Icons:** Lingerie inspired by iconic characters can be both fun and sexy.

Where to Find Quality Cosplay Lingerie Sets

Finding the perfect **cosplay lingerie set** can be a delightful adventure. Many online retailers specialize in cosplay attire, offering a wide range of options. For example, you can explore that captures the essence of your favorite character.

Additionally, consider checking out community forums and social media groups where fellow cosplayers share their favorite finds. This can lead you to unique pieces that may not be widely available.

Conclusion

Choosing the perfect **cosplay lingerie set** is an exciting part of the cosplay experience. By understanding your character, selecting the right style, and sourcing quality pieces, you can enhance your cosplay and express your passion for the characters you love. Remember, the right lingerie not only complements your costume but also boosts your confidence, allowing you to fully embrace your character.

For more inspiration, check out this [video on cosplay lingerie sets](#) that showcases various styles and tips for choosing the best fit for your character.

References

- [cosplay lingerie sets](#)

``` This HTML document provides a comprehensive guide to choosing the perfect cosplay lingerie set, adhering to the specified requirements while ensuring SEO optimization and a professional tone.