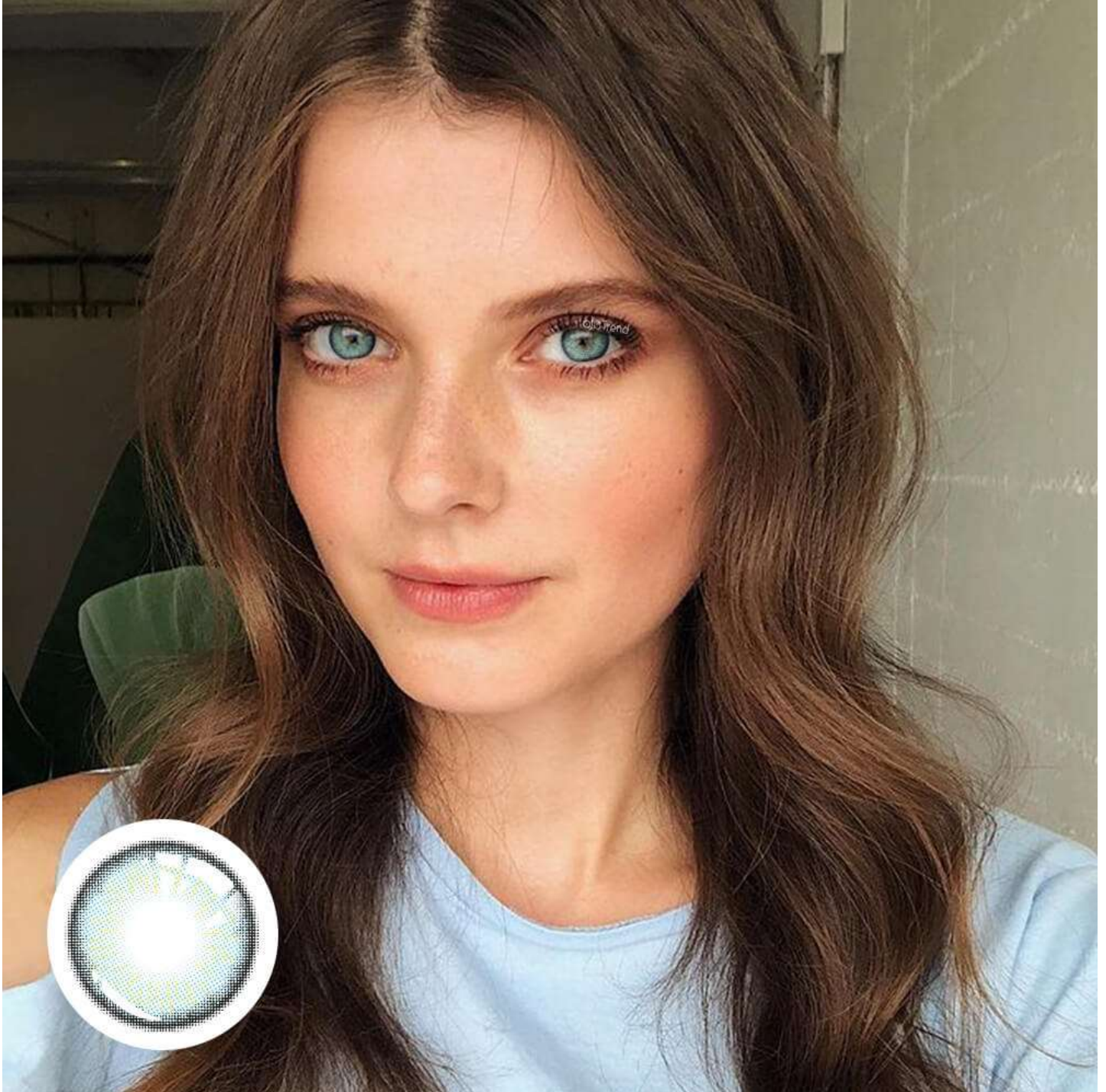


Understanding the Fundamental Differences

From this article you can learn [hard vs soft contact lenses](#).

When it comes to vision correction, the debate between hard and soft contact lenses has been ongoing in the eyewear industry for decades. Both types of lenses serve the same purpose, but their composition and design set them apart. Hard contact lenses, also known as rigid gas permeable lenses, are made of durable materials that offer excellent visual acuity. On the other hand, soft contact lenses are crafted from flexible, water-containing plastics that prioritize comfort.



The Great Debate: Hard vs Soft Contact Lenses in the Eyewear Industry

One of the key distinctions between hard and soft contact lenses lies in their oxygen permeability. Hard lenses allow more oxygen to reach the cornea, promoting eye health and reducing the risk of certain complications. Soft lenses, while comfortable to wear, may restrict oxygen flow to the eyes, potentially leading to issues such as dryness and irritation.

Weighing the Pros and Cons

Hard contact lenses are known for their durability and longevity. They maintain their shape well and provide crisp vision correction. However, they may require a longer adaptation period and diligent care to prevent debris buildup. On the other hand, soft contact lenses offer immediate comfort and are easier to adapt to. They are ideal for individuals with active lifestyles but may need more frequent replacements due to their delicate nature.

Choosing the Right Option for You

When deciding between hard and soft contact lenses, it is essential to consider your lifestyle, visual needs, and eye health. If you prioritize sharp vision and are willing to invest time in lens maintenance, hard contact lenses may be the optimal choice. Conversely, if comfort and convenience are your top priorities, soft contact lenses could be the better fit. Consulting with an eye care professional can help you determine the most suitable option based on your individual circumstances.

References

- [hard vs soft contact lenses](#)