



## UNDERSTANDING MEDICAL MARIJUANA CARDS IN ARIZONA

<https://cardmmjonline.com/>

## WHAT ARE MARIJUANA EDIBLES?

- Marijuana edibles are exactly as their name suggests – food or beverages infused with cannabis. They are available in diverse formats, including gummies, chocolates, cookies, and even infused drinks. These items offer a smoke-free & and inconspicuous way for patients to experience the therapeutic advantages of medical marijuana.





## EXPLORING MARIJUANA CONCENTRATES

Marijuana concentrates form a distinct category of cannabis products that have garnered favor among holders of medical marijuana cards in Arizona. Concentrates represent highly potent cannabis extracts available in diverse formats like wax, shatter, and oil. They are commonly consumed through vaporization or dabbing methods, recognized for their rapid onset therapeutic effects.

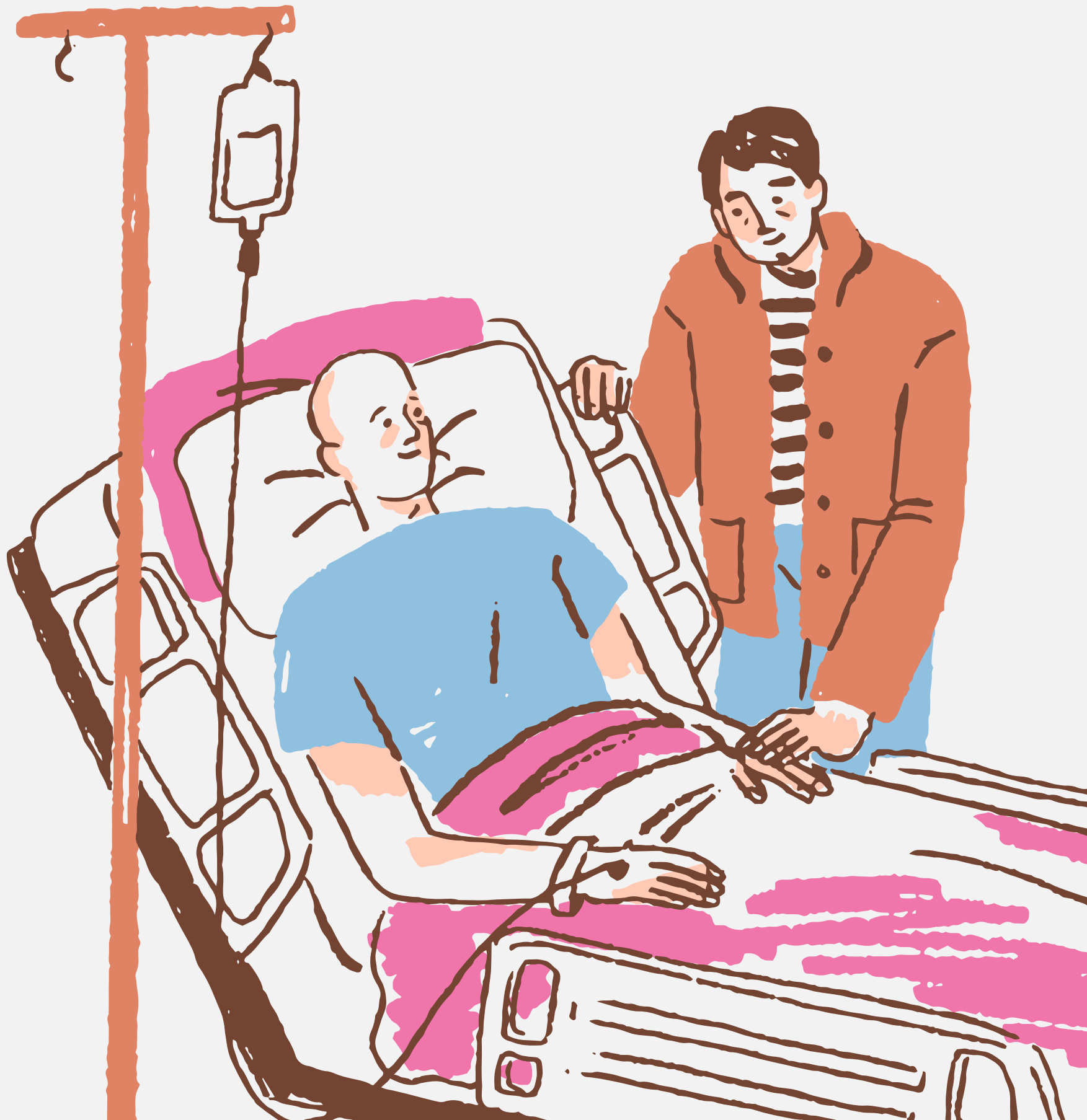
## BENEFITS OF MARIJUANA CONCENTRATES

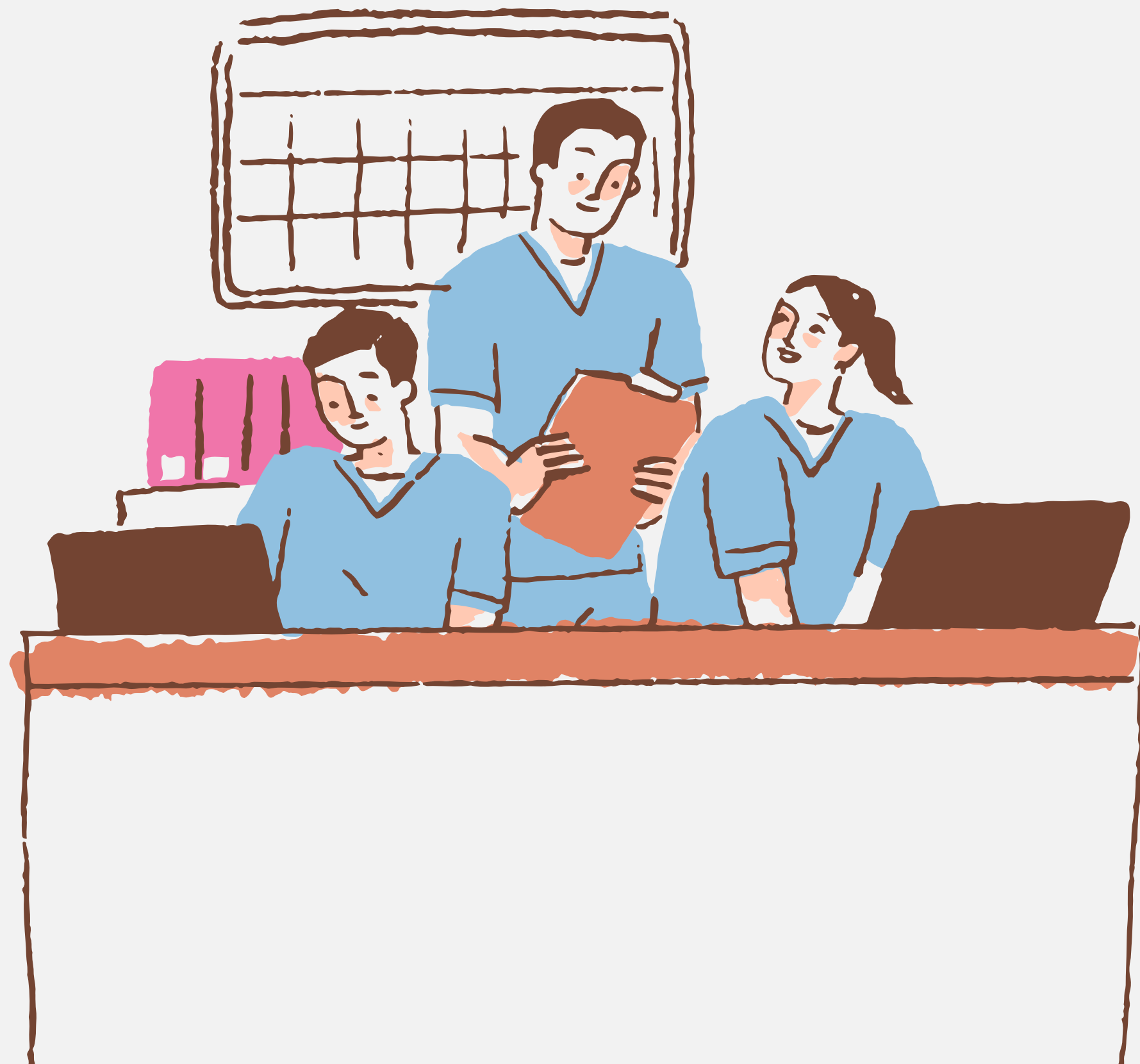
- The potency of marijuana concentrates stands out as a major advantage. These products can be particularly effective for patients in need of rapid and intense symptom relief. Nevertheless, owing to their high concentration, it's essential to exercise caution when dosing concentrates, especially if you are new to using these products.



## CONSULTING YOUR MEDICAL PROFESSIONAL


Should you contemplate integrating marijuana edibles or concentrates into your treatment regimen in Arizona, it is prudent to seek counsel from a healthcare specialist. A medical professional can offer tailored advice, taking into account your distinct medical condition & and requirements. Their expertise can assist you in ascertaining the most suitable products, dosages, and consumption techniques for your unique situation.





# GET IN TOUCH

Our administrative staff is available to assist you 24/7, contact us anytime through the following:

 6028577470

 cardmmjonline@gmail.com

 <https://cardmmjonline.com/>

 1806 w. camelback rd, phoenix, AZ, 85015, USA